



Church Mount, Hampstead Garden Suburb, N2



020 7402 9494

www.bargets.co.uk

16 Park Road, Regent's Park, London NW1 4SH

Facsimile: 020 7724 7055

Email: enquiries@bargets.co.uk



020 7402 9494

A stunning 6 bedroom, split level modern family home (5243 sq ft), featuring a fabulous indoor swimming pool. Situated in this prestigious turning on the south side of 'The Suburb', just off Norrice Lea & backing onto Winnington Road, within moments of Lyttelton Playing Fields, with park, tennis courts & cafe).

The bright & contemporary interior has been finished to an exacting & meticulous standard with benefits including a magnificent entrance hall with feature staircase, reception room with gallery overlooking the magnificent kitchen/ family room, huge master suite with large dressing room & bathroom, 5 further bedrooms, 2 of which have separate study/dressing areas.

The lower ground floor leisure complex boasts an indoor swimming pool with swim rain jet shower feature, pool bar, changing room, shower, cinema/family room with doors opening to the garden & separate gym /studio.

ACCOMMODATION

AMENITIES

- 6 BEDROOMS**
- 4 BATHROOMS**
- 3 RECEPTION ROOMS**
- KITCHEN**
- MEDIA ROOM**
- SWIMMING POOL**
- GYM**
- UTILITY ROOM**
- GARAGE**
- DRIVEWAY**
- GARDEN**

TERMS

PRICE Price £5,395,000 subject to contract.







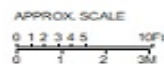
Church Mount, London N2

Approximate Gross Internal Area:
487.4 sq.mts. / 5246 sq.ft.
(Including Studio/Gym and reduced height area,
below 1.5m - denoted with dashed line)

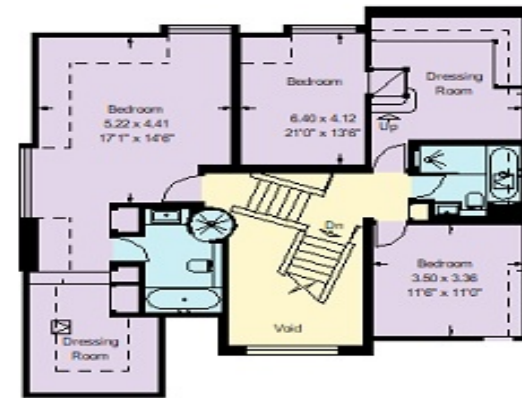


Ground Floor

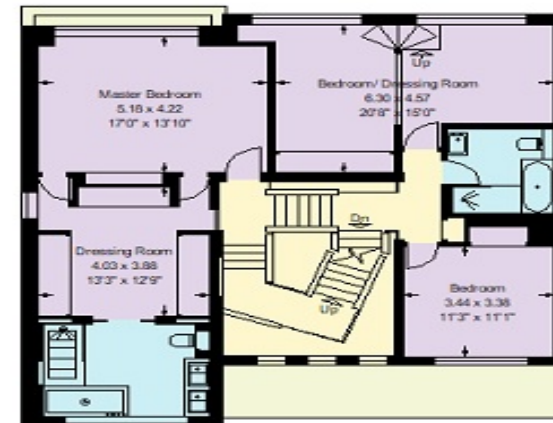
Floor Plans produced by
Pro plan
01461 642525



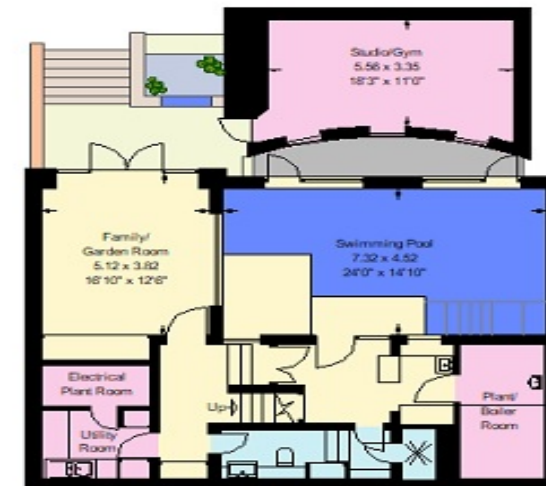
This plan is for guidance only and must
not be relied upon as a statement of fact.



Second Floor



First Floor



Lower Ground Floor