



Clarence Terrace, NW1



020 7402 9494

www.bargets.co.uk

16 Park Road, Regent's Park, London NW1 4SH
Facsimile: 020 7724 7055
Email: enquiries@bargets.co.uk



020 7402 9494

A rarely available duplex apartment in this classical Nash terrace directly opposite Regents Park. The property benefits from high ceilings, parking and many original period features. It also boasts its own private garden.

Clarence Terrace is located by the picturesque boating lake on the south-western corner of Regent's Park. It is perfectly situated for the excellent transport links at Baker Street Underground Station and for an easy stroll into Marylebone Village and the West End.

TERMS

TENURE

Leasehold

PRICE

£3,095,000 Subject to Contract



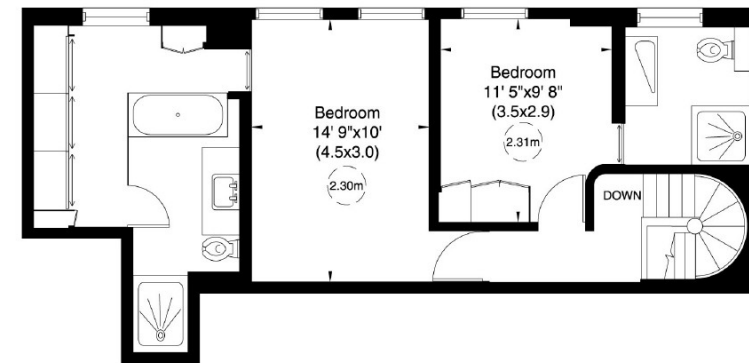
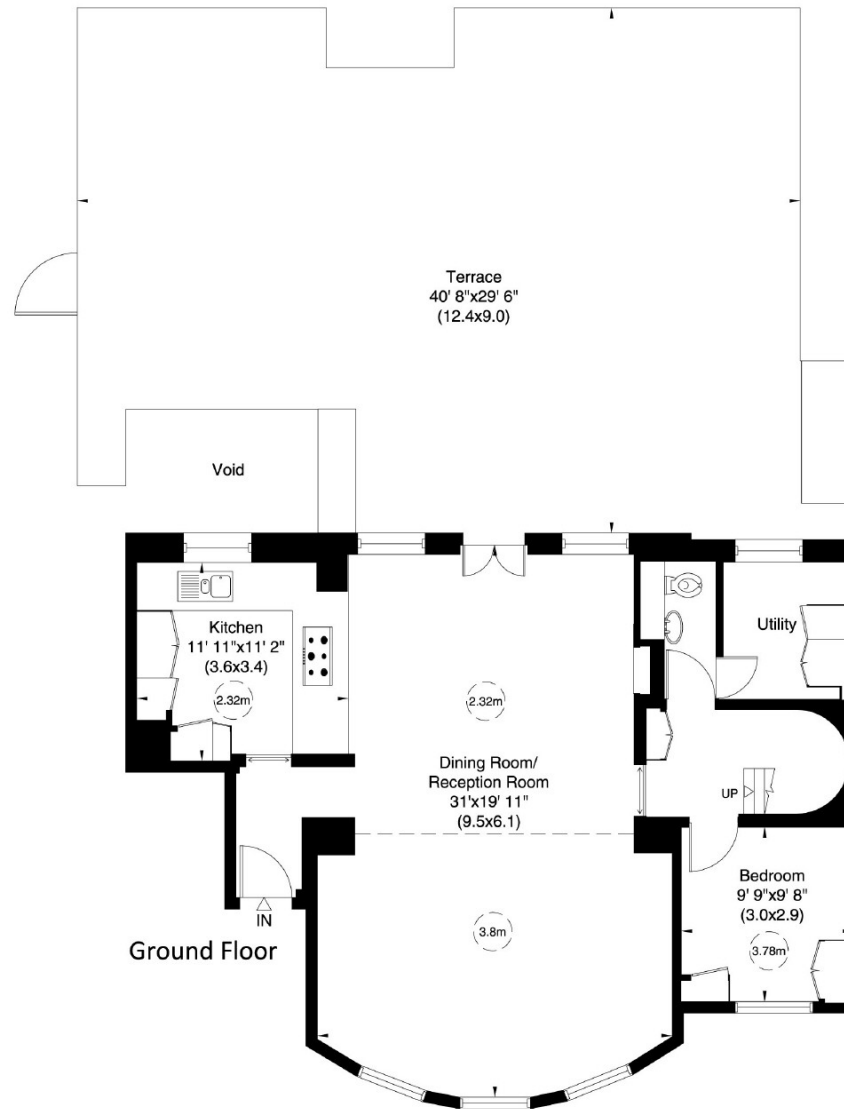


Clarence Terrace, NW1

Gross internal area (approx.)

145 Sq m (1562 Sq ft)

For identification only, Not to Scale



First Floor

Not to scale, for guidance only and must not be relied upon as a statement of fact. All measurements and areas are approximate only (and have been prepared in accordance with the current edition of the RICS Code of Measuring Practice).