



North End, Hampstead, NW3



020 7402 9494

www.bargets.co.uk

16 Park Road, Regent's Park, London NW1 4SH
Facsimile: 020 7724 7055
Email: enquiries@bargets.co.uk



020 7402 9494

An architecturally designed modern town house, combining luxury living alongside state of the art green technology, position on the doorstep of Hampstead Heath and Hampstead Village.

This brand new, luxurious high quality home offers sophisticated bright modern interiors arranged over four levels, comprising four/five bedrooms, kitchen/dining room, media room and a large reception space with full width bi-folding doors opening out to split level courtyards and gardens.

Located on North End, this exclusive gated development is positioned within 1,100 metres of both Hampstead Village and Golders Green, along with a vast range of shops, cafés, restaurants and underground stations (North Line).

ACCOMMODATION

AMENITIES

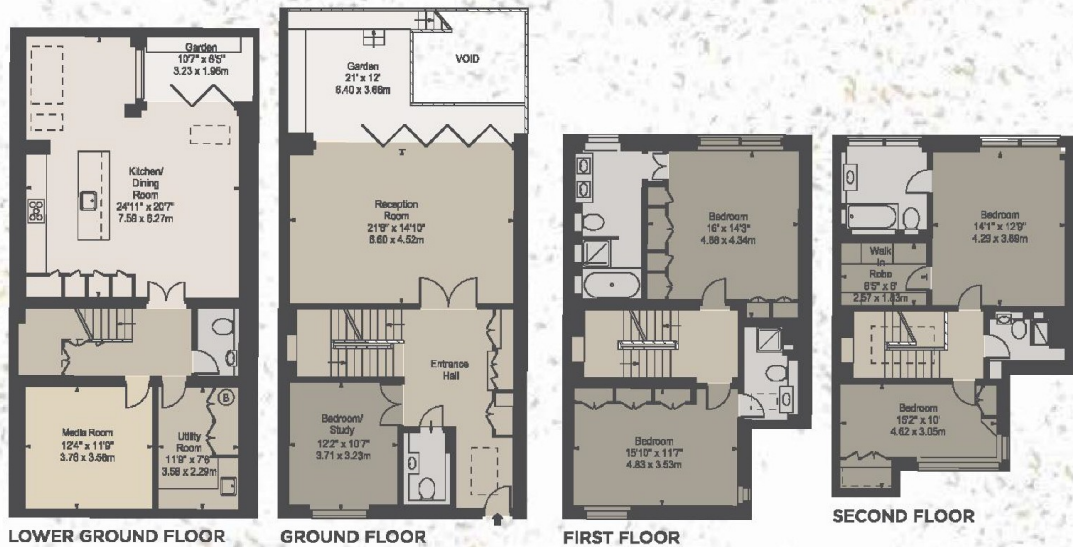
- RECEPTION ROOM
- KITCHEN/DINING ROOM
- MEDIA ROOM
- FOUR/FIVE BEDROOMS
- TWO EN-SUITE BATHROOMS
- TWO BATHROOMS
- GUEST CLOAKROOM
- UTILITY ROOM
- COURTYARDS & GARDENS
- ALLOCATED PARKING

PRICE

£3,450 Per Week, Subject to Contract



HOUSE C: APPROX GROSS INTERNAL AREA 2,828 SQ FT - 262.72 SQ M
APPROX FLOOR AREA INCLUDING RESTRICTED HEIGHTS 2,840 SQ FT - 263.84 SQ M



HOUSE C: APPROX GROSS INTERNAL AREA 2,828 SQ FT - 262.72 SQ M
 APPROX FLOOR AREA INCLUDING RESTRICTED HEIGHTS 2,840 SQ FT - 263.84 SQ M

