



Regency Lodge, Adelaide Road, NW3



020 7402 9494

www.bargets.co.uk

16 Park Road, Regent's Park, London NW1 4SH

Facsimile: 020 7724 7055

Email: enquiries@bargets.co.uk



020 7402 9494

The property comprises of a large bright reception room and a separate dining room which could alternatively be a further bedroom. 4 bedrooms, 3 bathrooms (2 En Suite) and a separate kitchen.

Regency Lodge is within easy access of the local amenities of Finchley Road and the beautiful surroundings of Primrose Hill, as well as the shops, bars and restaurants of St John's Wood and Belsize Park. Nearest tube station is Swiss Cottage (Jubilee line) providing excellent links to the City and West End.

ACCOMMODATION

AMENITIES

ENTRANCE HALL

4 BEDROOMS

3 BATHROOMS (2 EN SUITE)

RECEPTION ROOM

DINING ROOM OR BEDROOM

KITCHEN

GUEST CLOAKROOM W.C

PORTER/CONCIERGE

TERMS

TENURE

Leasehold

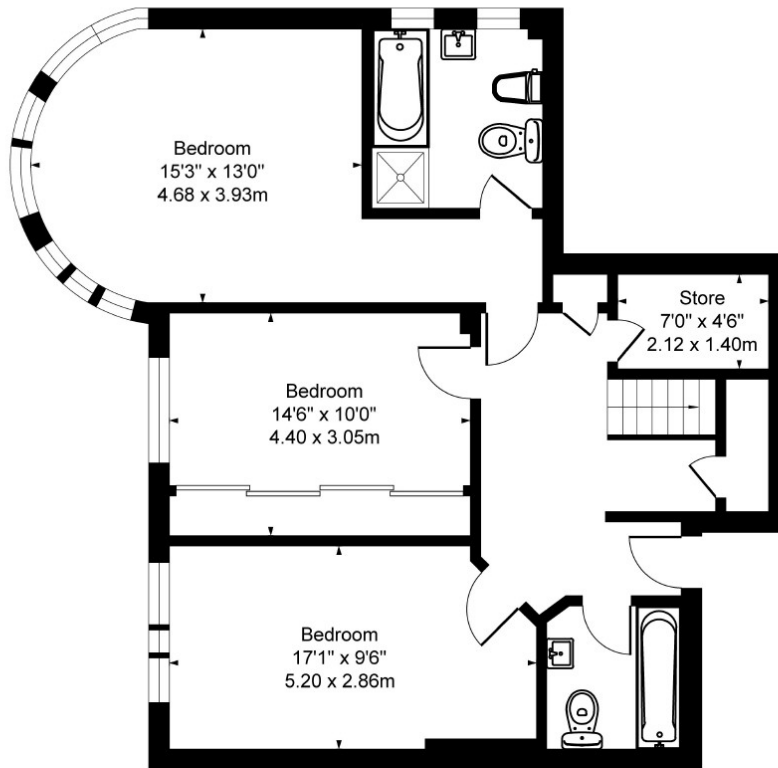
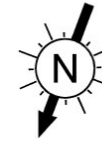
PRICE

Price £1,250,000 subject to contract

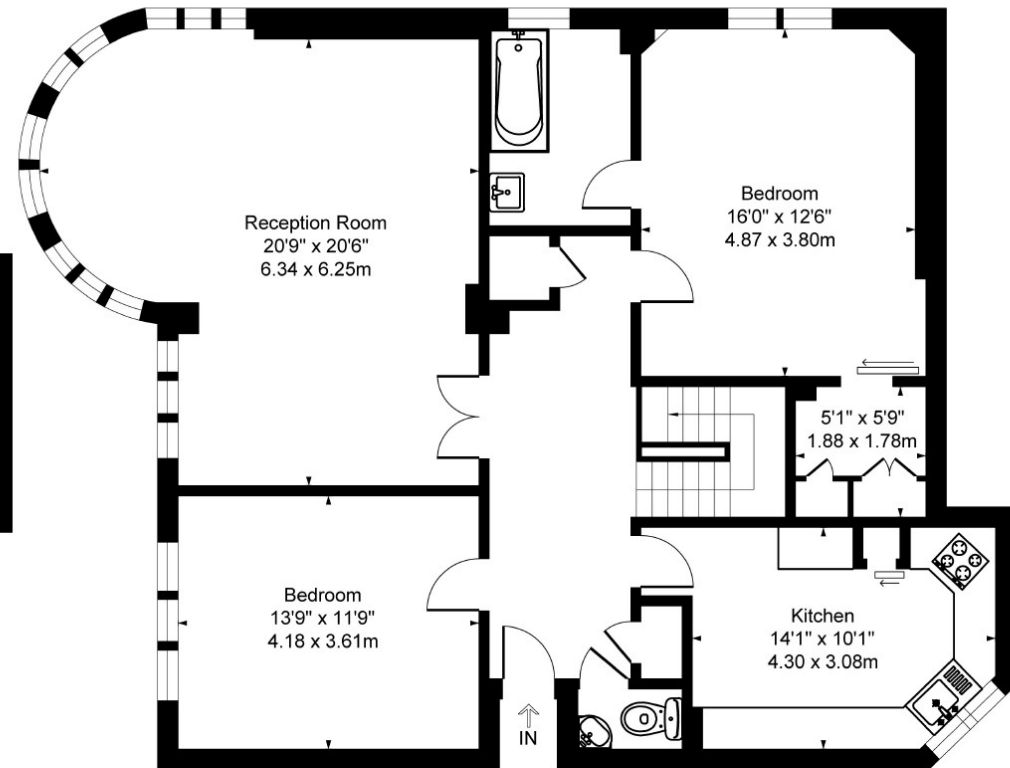




Regency Lodge, NW3
Approximate Gross Internal Area
2061 sq ft - 191 sq m



Lower Ground Floor



Ground Floor

Illustration for identification purposes only, not in scale