

**LITCHFIELD WAY  
HAMPSTEAD GARDEN SUBURB  
LONDON  
NW11**



**Bargets Estate Agents**



**A SIX BEDROOM FAMILY HOME,  
WITH OFF-STREET PARKING, ENJOYING A 70 FT REAR GARDEN**

*Litchfield Way is ideally situated in the heart of the favoured side of Hampstead Garden Suburb*















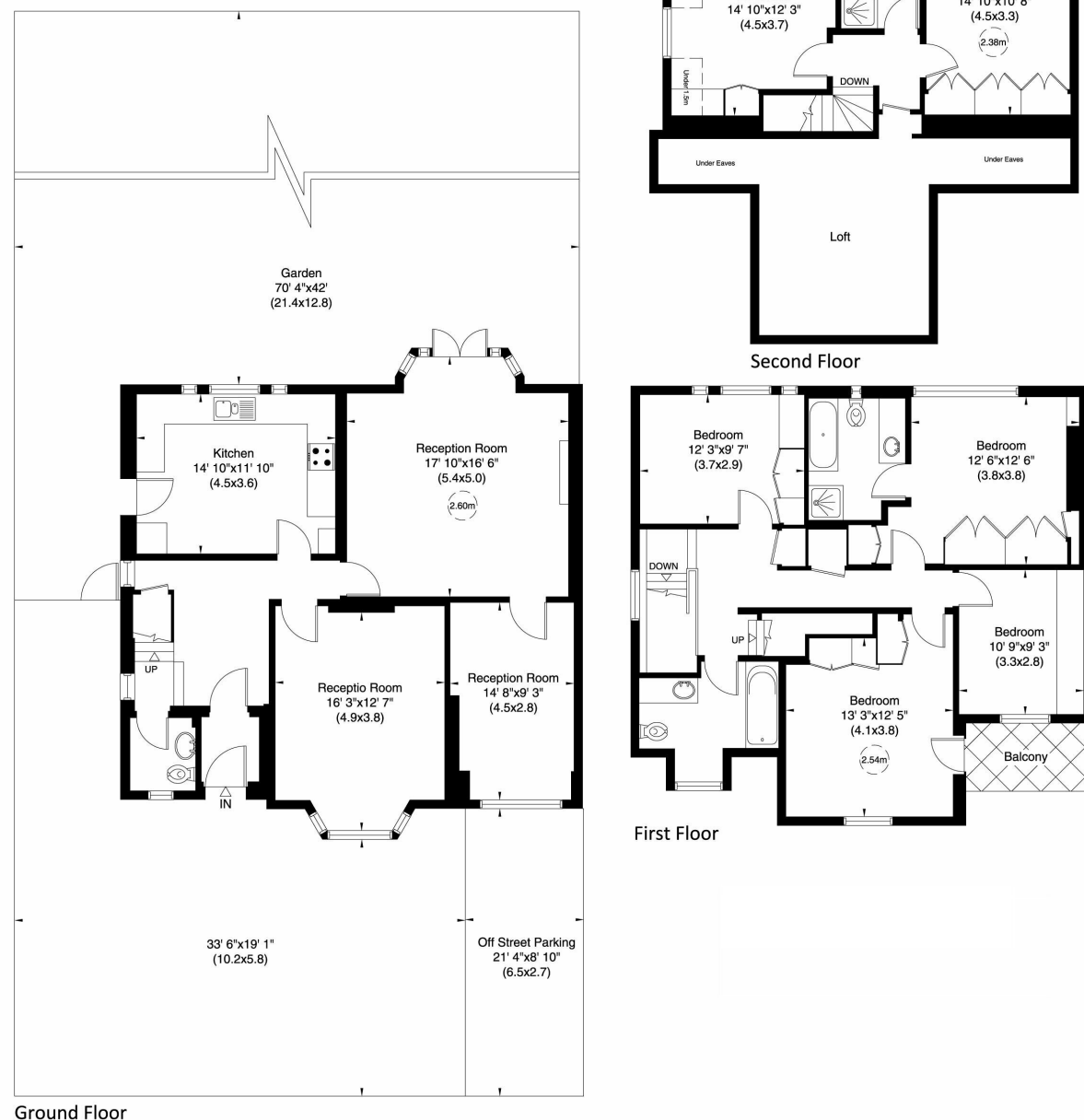


## 14 Litchfield Way, NW11

Approximate Gross Internal Area

246 sq m/ 2647 sq ft Including Under 1.5m, Under Eaves and Loft  
213 sq m/ 2289 sq ft Excluding Under 1.5m, Under Eaves and Loft

Not to Scale, for identification only



Ground Floor

First Floor

Second Floor

For guidance only and must not be relied upon as a statement of fact.  
All measurements and areas are approximate only (and have been prepared in accordance with the current edition of the RICS Code of Measuring Practice).



## ACCOMMODATION

**3 RECEPTION ROOMS**  
**6 BEDROOMS**  
**3 BATHROOMS (1 EN-SUITE)**  
**KITCHEN**  
**GUEST CLOAKROOM**  
**70 FT REAR GARDEN**  
**OFF-STREET PARKING**  
**LOFT**

**FREEHOLD**

**OFFERS IN EXCESS OF**  
**£1,700,000**

**Subject to Contract**