



Elsworthy Road, London, NW3

A stunning 8 bedroom home of over 6000 sq ft set behind gates, situated right next to Primrose Hill park, and finished to the very highest standard throughout.

ACCOMMODATION

8 BEDROOMS, 2 RECEPTIONS, LARGE EAT-IN KITCHEN/DINER LEADING ONTO A PRIVATE GARDEN, GUEST W/C, LARGE OFFICE, GYM, 1 BEDROOM APARTMENT FOR NANNY, ADDITIONAL KITCHEN, 5 BATHROOMS, LARGE STORAGE ROOM

AMENITIES

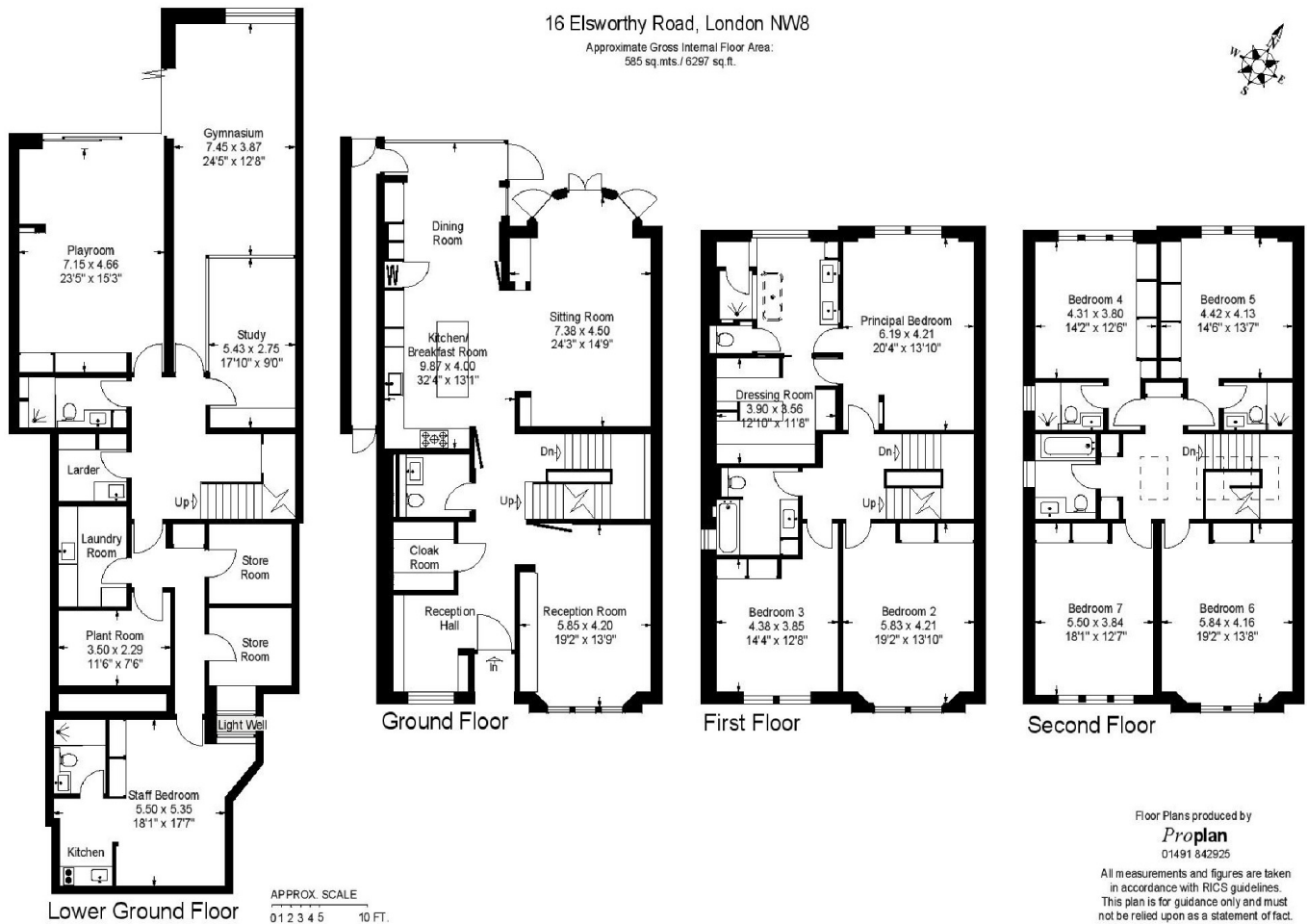
OFF STREET PARKING., GARDEN

TERMS

PRICE - £8,750 Per Week, Subject to Contract

16 Elsworthy Road, London NW8

Approximate Gross Internal Floor Area:
 585 sq.mts / 6297 sq.ft.



Floor Plans produced by
Proplan
 01491 842925

All measurements and figures are taken in accordance with RICS guidelines. This plan is for guidance only and must not be relied upon as a statement of fact.

