



Ennismore Gardens, Knightsbridge, London, SW7



020 7402 9494

A generously proportioned maisonette spanning approximately 3400 sqft, this superb 5 bedroom apartment is well positioned on the sought-after south terrace of Ennismore Gardens in Knightsbridge. The grand proportions of the raised ground floor showcase the period features of this imposing Victorian building with an elegant entrance hall, a large double-reception room overlooking the communal gardens and an spacious kitchen with breakfast area. There is staircase leading to the lower floor with three bedroom suites and a further double bedroom, with the study leading onto the courtyard.

Ideally located just south of Hyde Park, Ennismore Gardens is an immaculate garden square with near immediate access to the numerous shops, restaurants and designer boutiques of the Brompton Road and Sloane Street. Nearby are a number of highly regarded schools and popular department stores, including Harrods, as well as famous museums such as the V&A.

ACCOMMODATION & AMENITIES

- **Five Bedrooms**
- **Four Bathrooms**
- **Reception Room**
- **Dining Room**
- **Kitchen/Breakfast Room**
- **Study**
- **Guest Cloakroom**
- **Storage**
- **Private Courtyard**
- **Access to Residents Gardens**

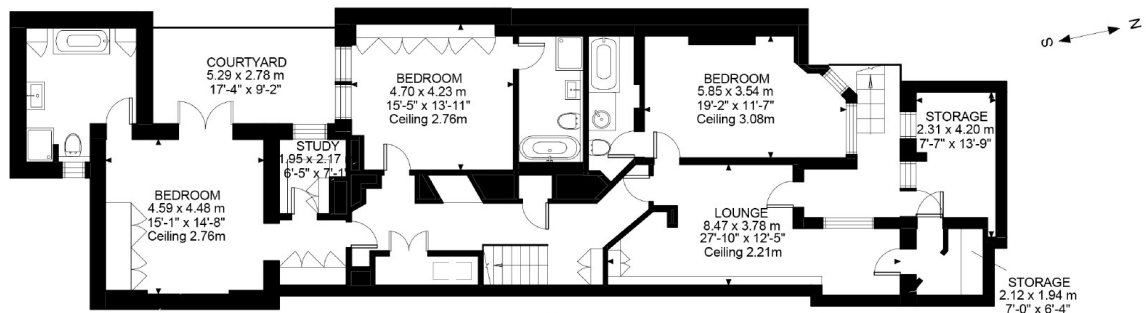
TERMS

Leasehold, Plus Share of Freehold

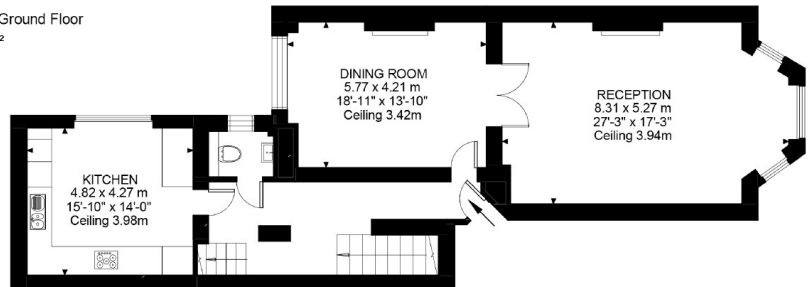
£4,995,000 Subject to Contract



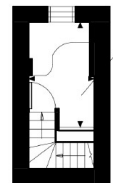




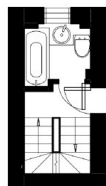
Lower Ground Floor
1739 ft²



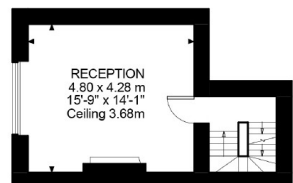
Ground Floor
1253 ft²



Second Floor
88 ft²



Entrance To First Floor
92 ft²

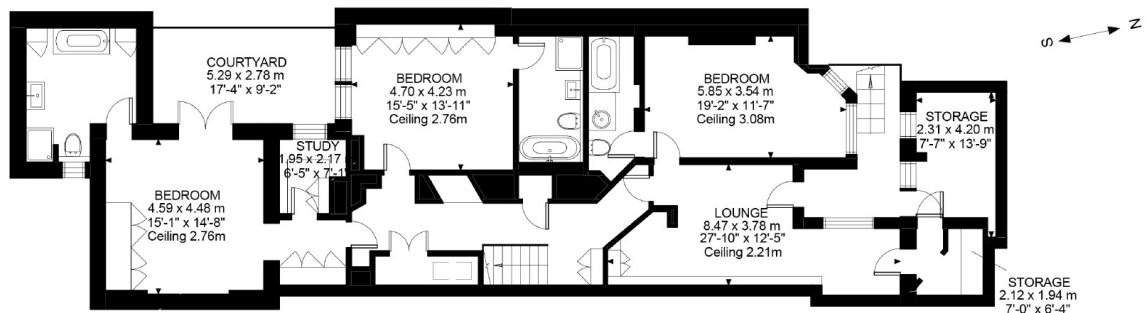


First Floor
283 ft²

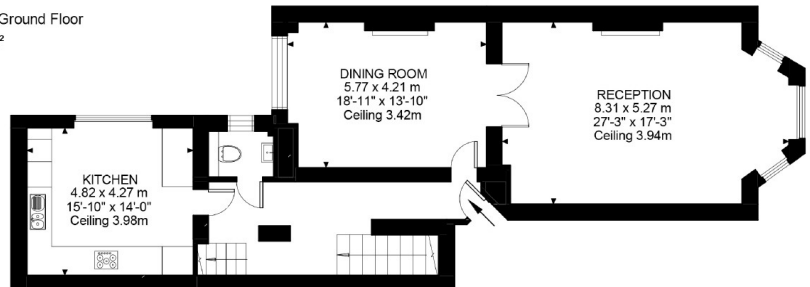
Ennismore Gardens, SW7
 Approximate Gross Internal Area
 321.01 SQ.M / 3455 SQ.FT

Illustration for identification purposes only. Not to scale.
 Floor Plan Drawn According To RICS Guidelines.

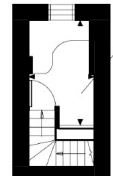




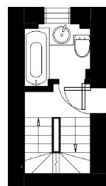
Lower Ground Floor
1739 ft²



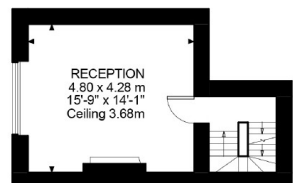
Ground Floor
1253 ft²



Second Floor
88 ft²



Entrance To First Floor
92 ft²



First Floor
283 ft²

Ennismore Gardens, SW7
 Approximate Gross Internal Area
 321.01 SQ.M / 3455 SQ.FT

Illustration for identification purposes only. Not to scale.
 Floor Plan Drawn According To RICS Guidelines.

