



Bancroft Avenue, Hampstead Garden Suburb, London, N2



020 7402 9494

An exceptional family home located on this premier road providing generous entertaining spaces, well proportioned family accommodation, including five bedrooms, off street parking and a large private garden.

Bancroft Avenue is a beautiful residential street located off The Bishops Avenue and in close proximity to transport links and local amenities of East Finchley & Highgate, with the green open spaces of Kenwood & Hampstead Heath close by .

### **ACCOMMODATION**

- 2 RECEPTION ROOMS
- DINING ROOM
- KITCHEN/BREAKFAST ROOM
- CONSERVATORY
- 5 BEDROOMS
- 2 EN SUITE BATHROOMS
- FAMILY BATHROOM
- 1 EN SUITE TOILET
- GUEST CLOAKROOM
- UTILITY ROOM
- PRIVATE GARDEN
- OFF STREET PARKING

### **TERMS**

**TENURE**

Freehold

**PRICE**

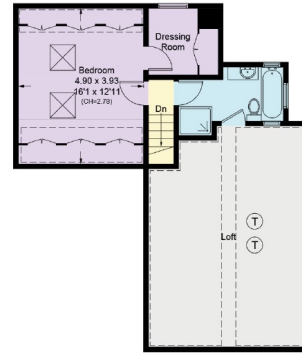
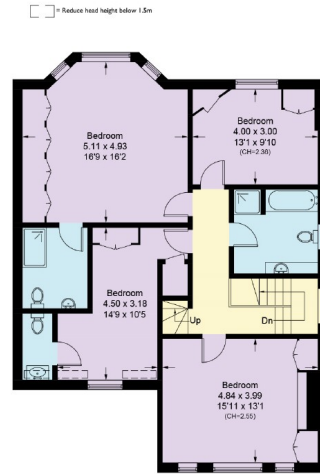
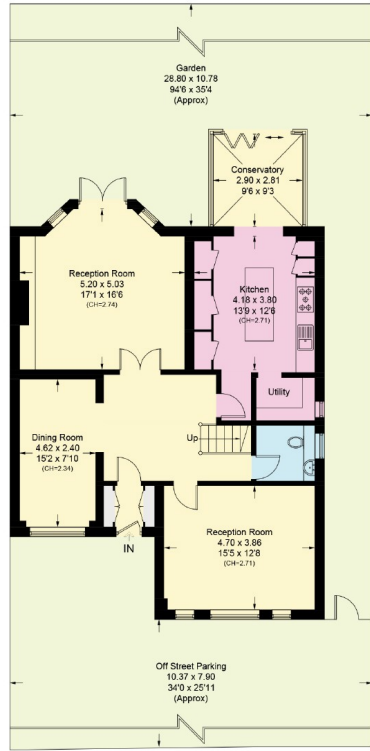
£2,500,000 subject to contract





# Bancroft Avenue, N2

Approximate Area = 277.8 sq m / 2990 sq ft  
Including Limited Use Area (39.9 sq m / 429 sq ft) and Loft



Surveyed and drawn in accordance with the International property measurements standards (IPMS 2: Residential) Not drawn to scale unless stated.  
Whilst every care is taken in the preparation of this plan, please check all dimensions, shapes and compass bearings before making any decisions reliant upon them.

