



View Road

HIGHGATE

NW8

A beautiful six-bedroom detached house, refurbished to a high standard, with bright open-plan entertaining spaces and a large garden located in the hub of Highgate.

LIFT TO ALL FLOORS

LARGE GARDEN

PLENTY OF PARKING SPACES

SWIMMING POOL

SPA FACILITIES

THREE RECEPTION ROOMS

Set behind a gated carriage driveway, this exceptional 14,631 sq ft detached home is located moments from Hampstead Heath. Arranged over four levels, with a lift serving all floors, View Road offers generous living accommodation with a wealth of space for family living and entertaining, this impressive property also has a large private garden.

The ground floor offers spacious, functional, and lateral family living with a grand reception hall, a large sitting room and study, a kitchen leading to the family living/dining area, overlooking the beautifully landscaped garden, along with an additional dining room and drawing room.

On the first floor there is an opulent principal bedroom, complete with a large dressing room and a luxury double bathroom, as well as two further bedrooms, both with ensembles, a lounge area, and a balcony. The second floor comprises of three further bedrooms, each with their own generous ensuite.

The lower ground floor offers an exceptional leisure complex, including an indoor swimming pool, jacuzzi, sauna, gym/games room with views of the courtyard, cinema, and a wine cellar. As well as a self-contained suite with kitchen/lounge area and a separate entrance.





LOCATION

Highgate is a highly sought-after residential area moments from the shops, bars and restaurants of Highgate Village. The property is located within a 10 minute walk from Kenwood House which gives access to Hampstead Heath and 0.4 miles from Highgate Golf Club. Highgate underground station (northern line) is the closest station.

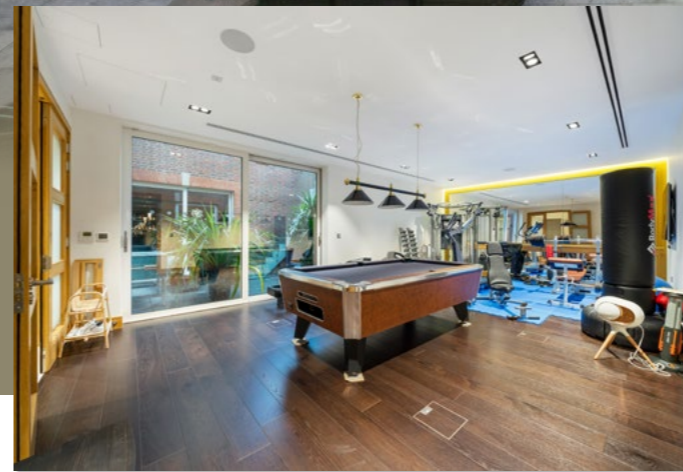
TERMS

Tenure Freehold
Guide Price £18,950,000
Local Authority Haringey
Council Tax Band H
EPC Rating B



ACCOMMODATION & AMENITIES

- Triple-height galleried reception hall
- Drawing room
- Dining room
- Kitchen
- Family room
- Study
- Sitting room
- Seven bedroom suites
- Swimming pool
- Sauna and steam room
- Shower room
- Wine cellar
- Gym/games room
- Cinema/bar room
- Laundry room
- Double garage with further off-street parking behind gates
- Large private garden





View Road, N6

Total = 1359.3 sq m / 14631 sq ft

Approximate Gross Internal Area = 849.9 sq m / 9148 sq ft

(Including Garage / Lifts / Excluding Reduced Headroom / Courtyard / Voids)

Basement = 492.8 sq m / 5304 sq ft

Reduced Headroom = 16.6 sq m / 179 sq ft



Basement



Ground Floor



First Floor



Second Floor