



Gilling Court, Belsize Grove, London, NW3



020 7402 9494

A bright & spacious well-presented one bedroom apartment for sale, positioned on the ground floor of an attractive & popular Art Deco style purpose built block in the heart of Belsize Park.

Gilling Court is located within walking distance from the boutique, shops, restaurants of England's Lane, Primrose. It is moments walk from Haverstock Hill and Belsize Park (Northern Line) Underground Station.

ACCOMMODATION

- RECEPTION ROOM
- DOUBLE BEDROOM
- BATHROOM
- KITCHEN
- PORTER
- COMMUNAL GARDENS

TENURE

Leasehold - Share of Freehold

PRICE

Guide price £479,000 subject to contract

Service Charge £4,000 Per Annum Approximately

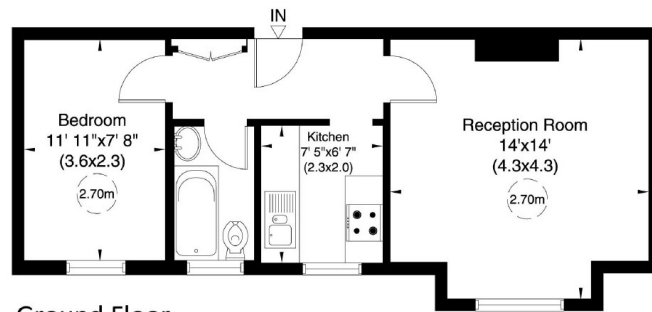


2 Gilling Court, Belsize Grove, NW3

Approximate Gross Internal Area

39 sq m/ 422 sq ft

Not to Scale, for identification only



Ground Floor

For guidance only and must not be relied upon as a statement of fact.

All measurements and areas are approximate only (and have been prepared in accordance with the current edition of the RICS Code of Measuring Practice).

