



Winnington Road, London, N2



020 7402 9494

A superb low built double fronted detached family residence set behind a sweeping carriage driveway occupying a prominent position in one London's premier prestigious residential roads.

This exceptional property offers spacious & generous living, with multiple entertaining areas, uniquely flexible lateral accommodation arranged over two floors and a stunning & sizeable private rear garden.

Winnington Road is a wide tree-lined street with a reputation for consistent impressive homes. In close proximity are Hampstead and Highgate Villages with their abundance of stylish boutiques, independent shops, cafes and artisan food stores, to the idyllic green spaces of Hampstead Heath and Kenwood. The location provides direct road links to The West End, The City, the A1 and the North Circular (A406). Nearest Underground stations are Hampstead, Highgate, Golders Green & East Finchley. Heathrow, Luton and City airports are easily accessible for private and commercial flights.

- Entrance Hall**
- Three Reception Rooms**
- Dining Room**
- Kitchen/Breakfast Room**
- Principal Bedroom Suite**
- Five Further Bedrooms**
- One En Suite Bathroom**
- Two Further Bathrooms**
- Two Guest Cloakrooms**
- Utility Room**
- Private Rear Garden**
- Loft Space**
- Carriage Driveway**

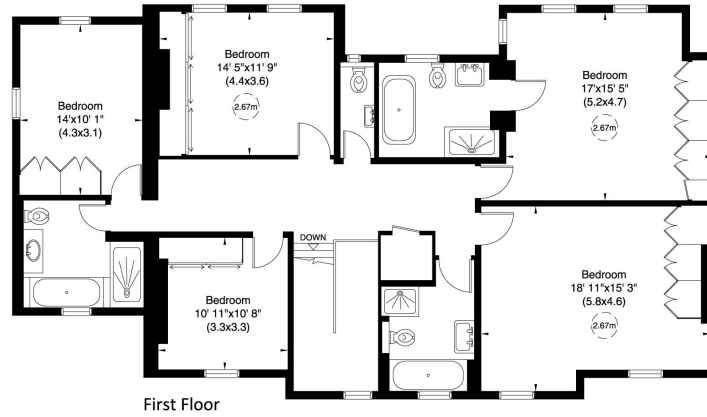
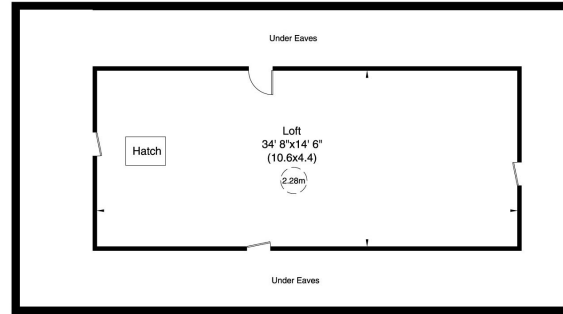
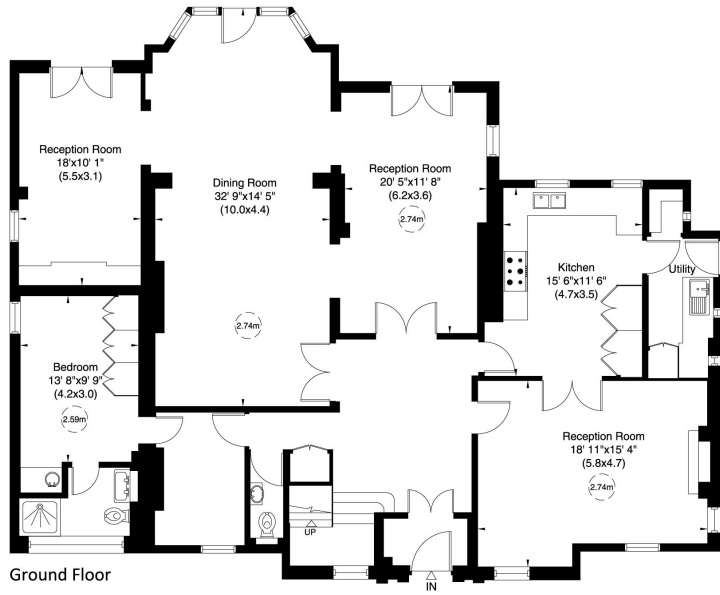
Tenure:
Freehold

Price:
£5,950,000 Subject to Contract





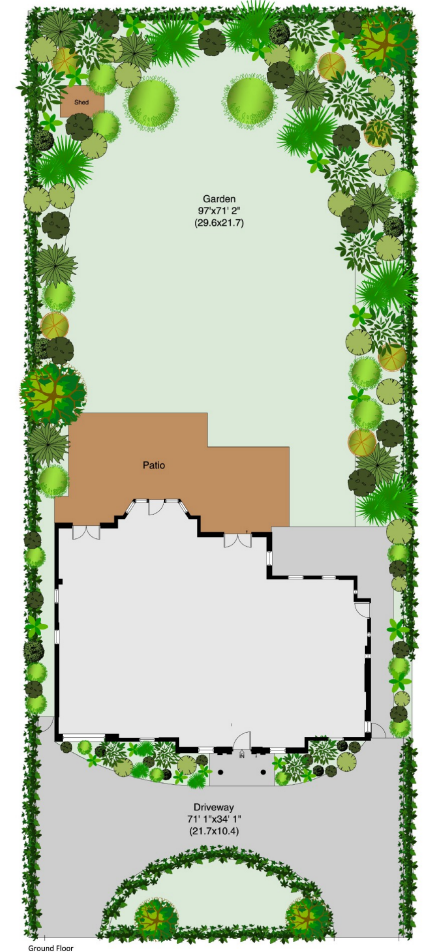
20 Winnington Road, N2
 Approximate Gross Internal Area
 445 sq m/ 4786 sq ft Including Loft
 342 sq m/ 3680 sq ft Excluding Loft
 Not to Scale, for identification only



For guidance only and must not be relied upon as a statement of fact.
 All measurements and areas are approximate only (and have been prepared in accordance with the current edition of the RICS Code of Measuring Practice).



20 Winnington Road, N2
 Site Plan
 0.28076217 Acre (approx.)
 Not to Scale, for identification only



Ground Floor