



Lexington Place, Finchley Road, NW11



020 7402 9494

www.bargets.co.uk

16 Park Road, Regent's Park, London NW1 4SH

Facsimile: 020 7724 7055

Email: enquiries@bargets.co.uk



020 7402 9494

This comfort-cooled, ground floor apartment is the largest unit in the prestigious development at 1,817 ft (168.8m). It has a traditional layout with 3/4 full Bedrooms, 3 Bathrooms (2 ensuite) open-plan 27ft x 18ft combined Kitchen/Grand Reception Room, with separate Dining Room, separate Utility. The Reception rooms are bright and have a South-facing aspect and the bedrooms overlook the courtyard with their manicured gardens. There are 4 Balconies off both of these rooms.

The entrance lobby is very grand and the apartment leads directly off this without the need to use the lift. The development offers a 12 hour Concierge, communal gardens, secure underground parking and an air-conditioned 800ft cavernous, fully fitted private gym and changing rooms for residents. The apartment has incredible ceiling heights and very high internal doors with 4 wall cupboards for storage. There is also one car space available (and one extra car space for rent).

Located on the corner of Finchley Road and Llanvanor Road within 5 minutes of the amenities of Golders Green and Temple Fortune and in walking distance of Hampstead Heath/Golders Hill Park.

ACCOMMODATION

3/4 BEDROOMS

BATHROOM

2 SHOWER ROOMS

2 RECEPTION ROOMS

KITCHEN

AMENITIES

4 BALCONIES

DAILY 12HR CONCIERGE

UNDERGROUND PARKING

STORAGE UNIT

COMFORT-COOLING/UNDER-FLOOR

HEATING

RESIDENTS GYM

TERMS

PRICE £1,750 Per Week subject to contract.







1 Lexington Place, 765 Finchley Road, NW11

Gross internal area (approx.)

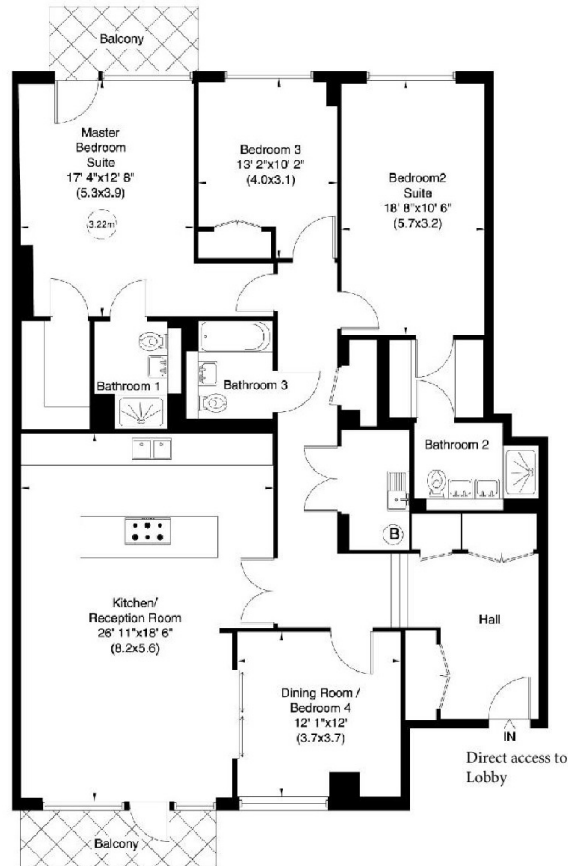
1831 Sq ft (170 Sq m)

For identification only, Not to Scale

Floor Plan by **capital group** 020 8671 7722



First Floor



Floor Plan

Not to scale, for guidance only and must not be relied upon as a statement of fact. All measurements and areas are approximate only (and have been prepared in accordance with the current edition of the RICS Code of Measuring Practice).