

**WILDWOOD ROAD
HAMPSTEAD GARDEN SUBURB
LONDON
NW11**

Bargets Estate Agents

ENJOYING VIEWS & DIRECT ACCESS ONTO THE HEATH EXTENSION



A superb and exceptionally well positioned semi-detached family home with driveway parking. This charming family home benefits from a stunning sun facing garden enjoying views and direct access onto the Heath Extension.

Arranged over three floors, the flexible accommodation comprises of: entrance hall, family room, reception room, principal bedroom suite, four further bedrooms, three en-suite bathrooms, country style kitchen & breakfast room, generous utility room, guest cloakroom, a summer house gym, sun facing garden and off-street driveway parking.

Wildwood Wood is a desirable and popular tree lined road, ideally located on the South Side of Hampstead Garden Suburb. Close distance to the green open spaces of the Heath Extension, Kenwood, Golders Hill Park and the extensive transport facilities at Golders Green Station (Northern Line), the many local shops, boutiques, cafes, restaurants and the excellent schooling/nurseries available within the area and adjoining Hampstead & Highgate.

FREEHOLD

PRICE

£3,250,000 Subject to Contract

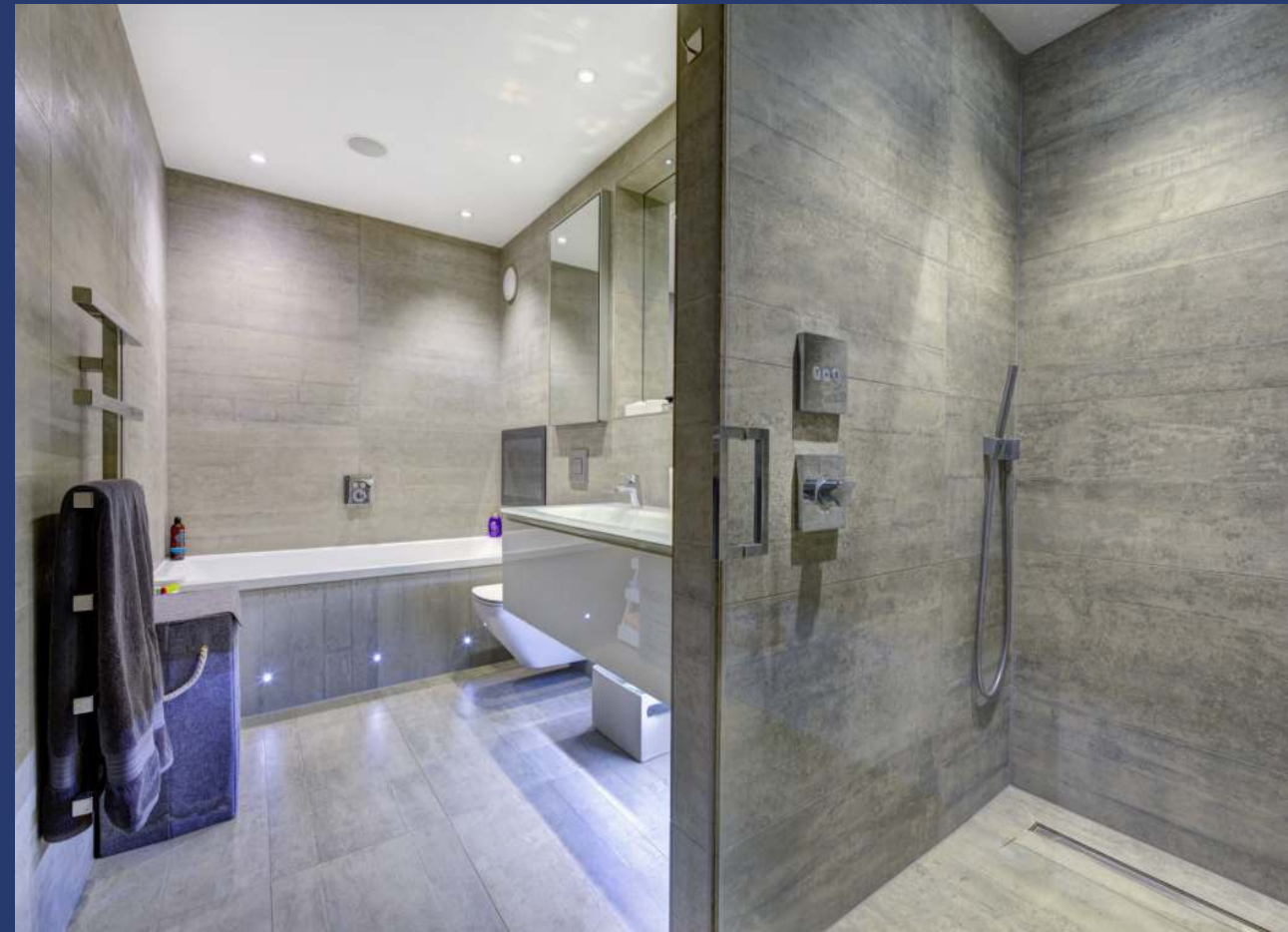
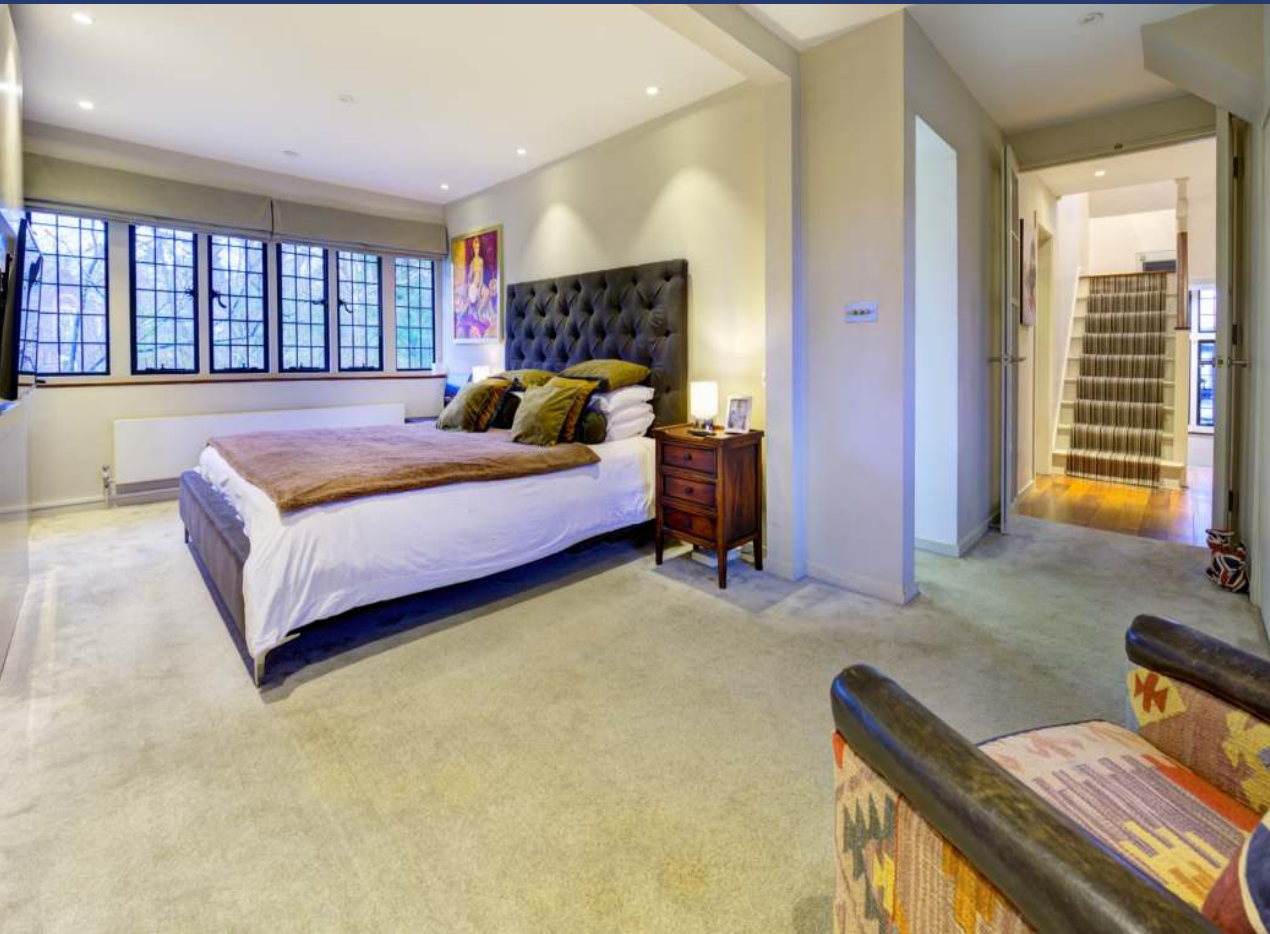






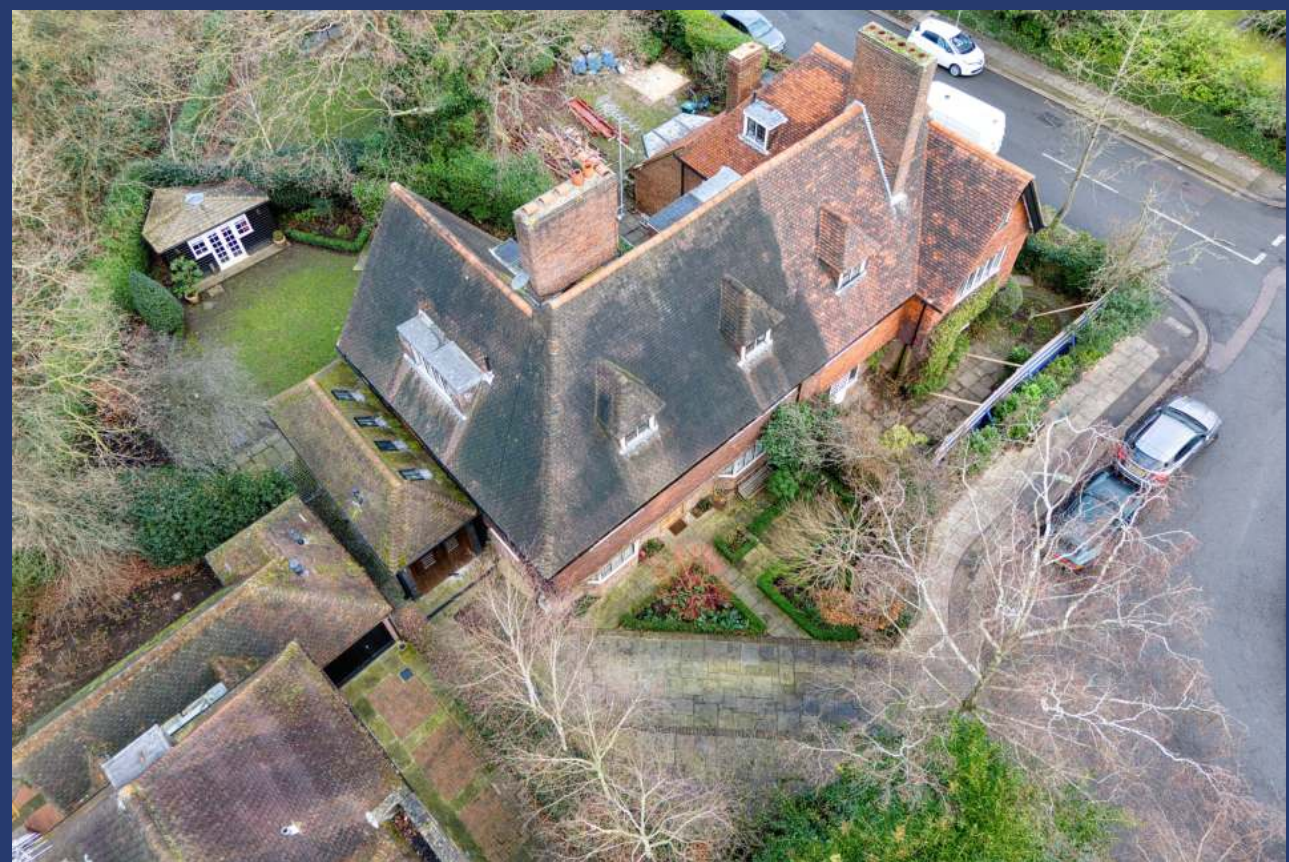












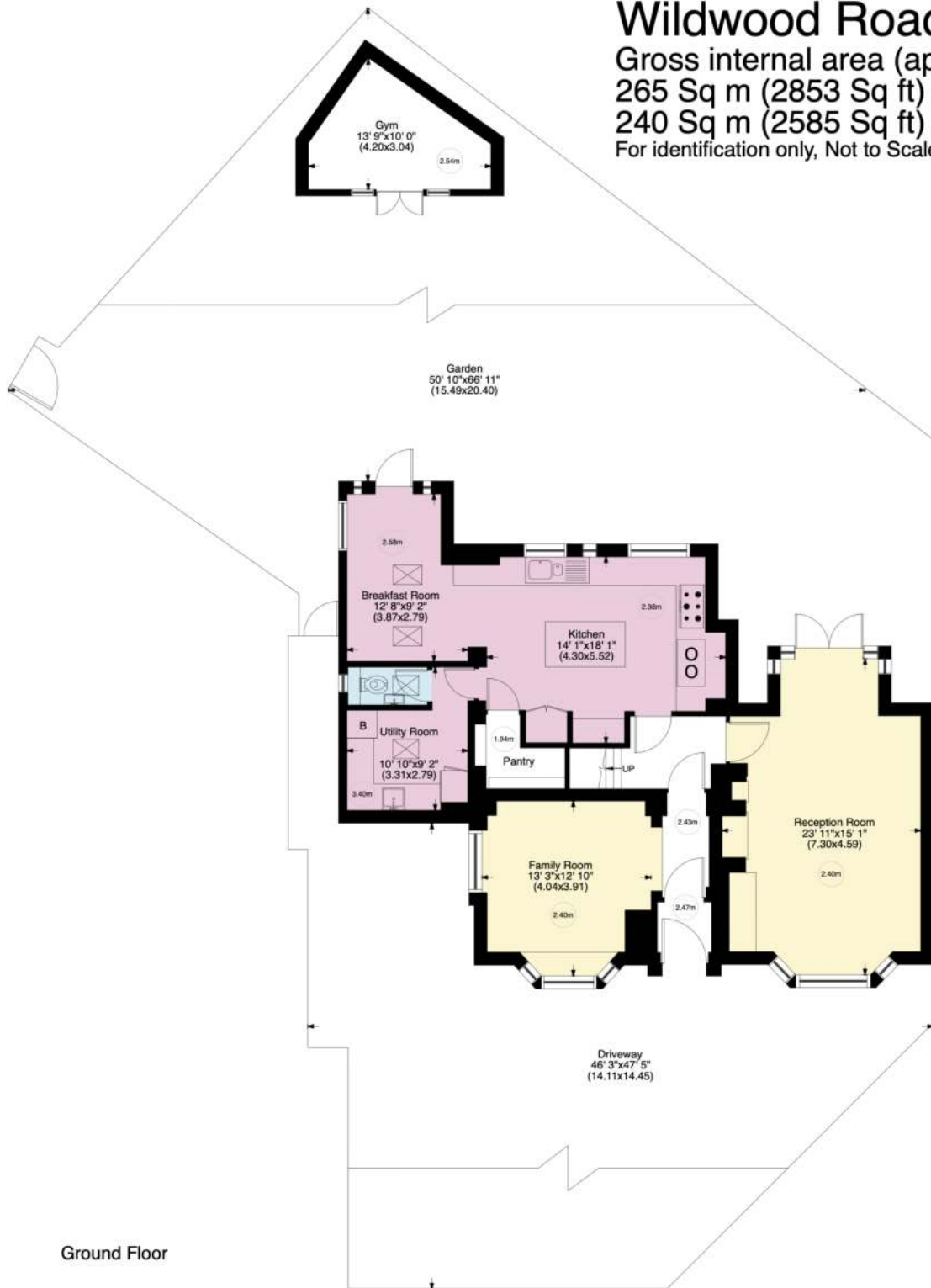
Wildwood Road NW11

Gross internal area (approx.)

265 Sq m (2853 Sq ft) Including Gym, under eaves and under 1.5m

240 Sq m (2585 Sq ft) Excluding Gym, under eaves and under 1.5m

For identification only, Not to Scale



Ground Floor



First Floor



Second Floor

Not to Scale, for guidance only and must not be relied upon as a statement to fact. All measurements areas are approximate only (and have been prepared in accordance with the current edition of the RICS Code of Measuring Practice).