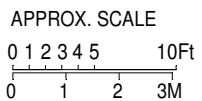
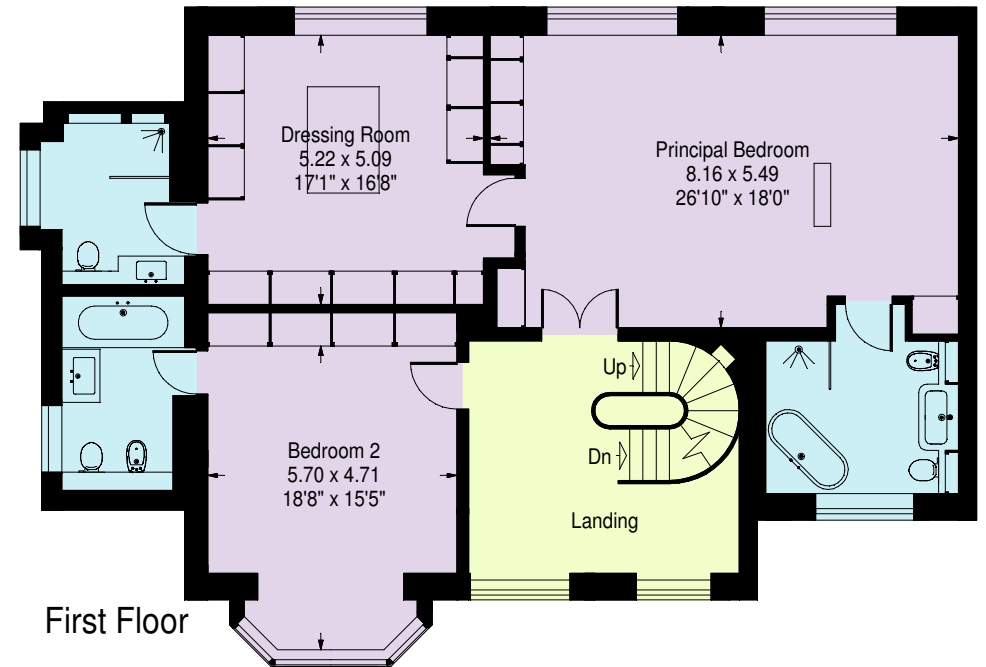
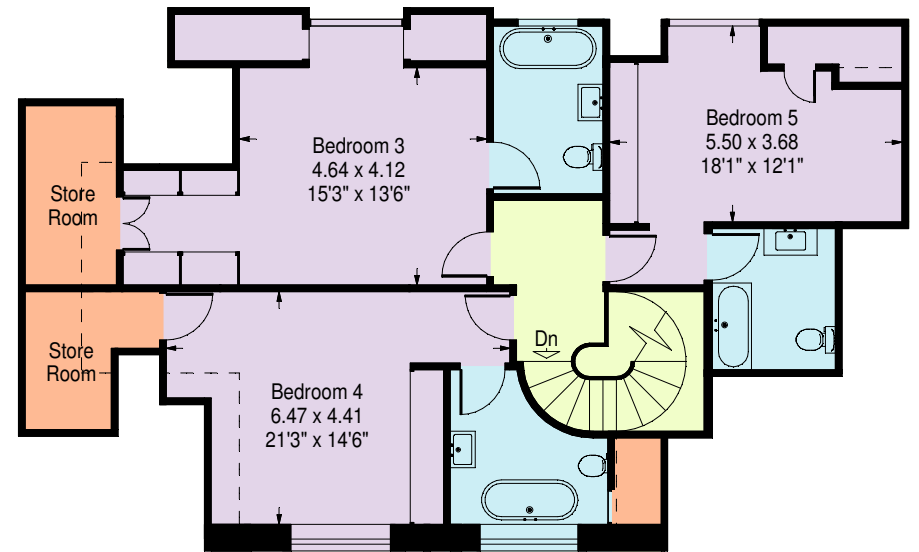
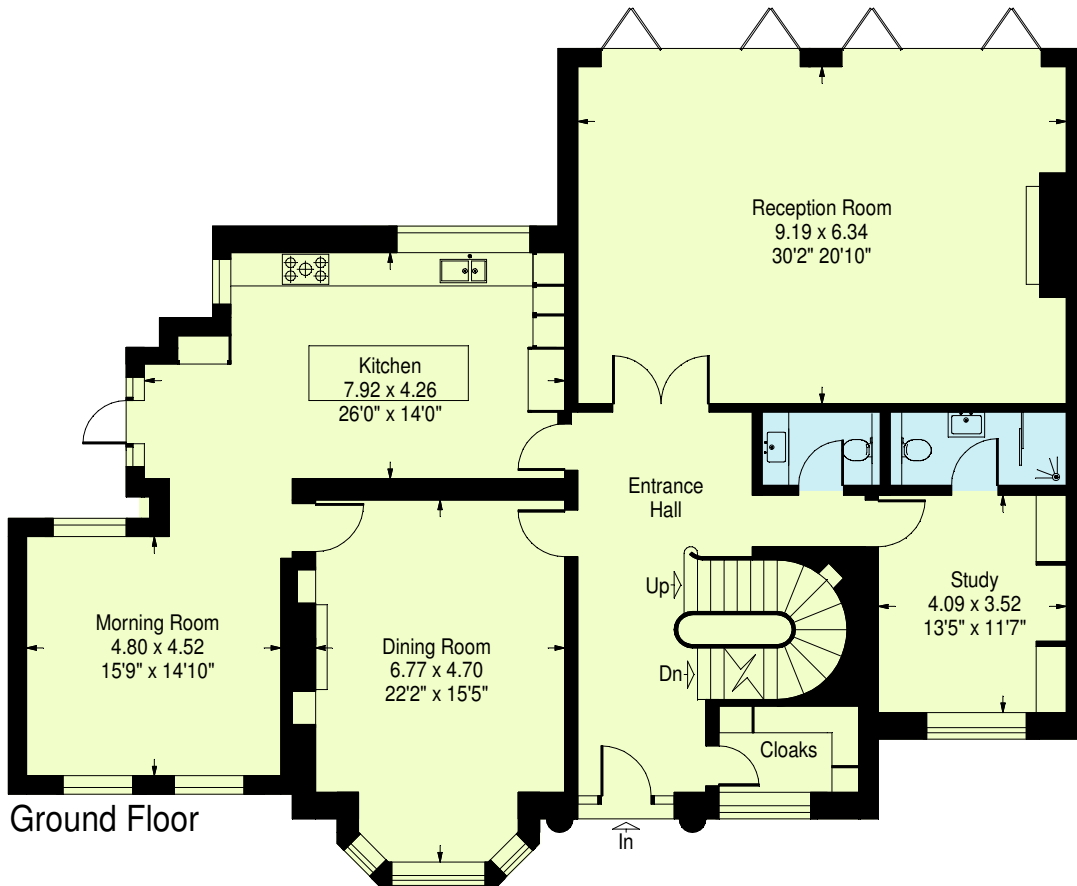


Elsworthy Road London NW3

Approximate Gross Internal Area:
888.8 sq.mts. / 9567 sq.ft.
(Including reduced height area,
below 1.5m - denoted with dashed line)
Reduced height area - 18.5 sq.mts. / 199 sq.ft.



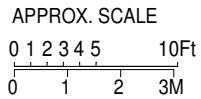
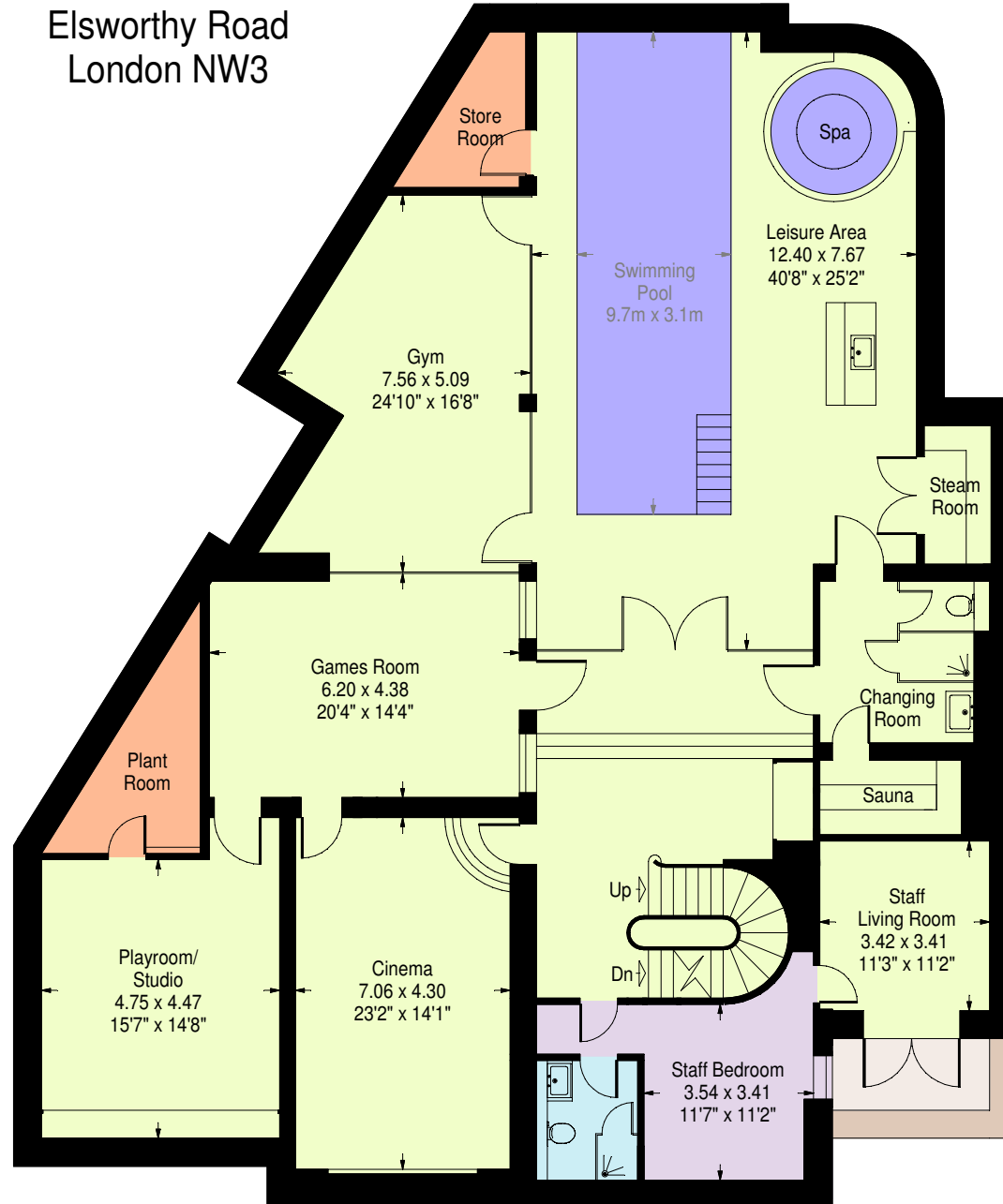
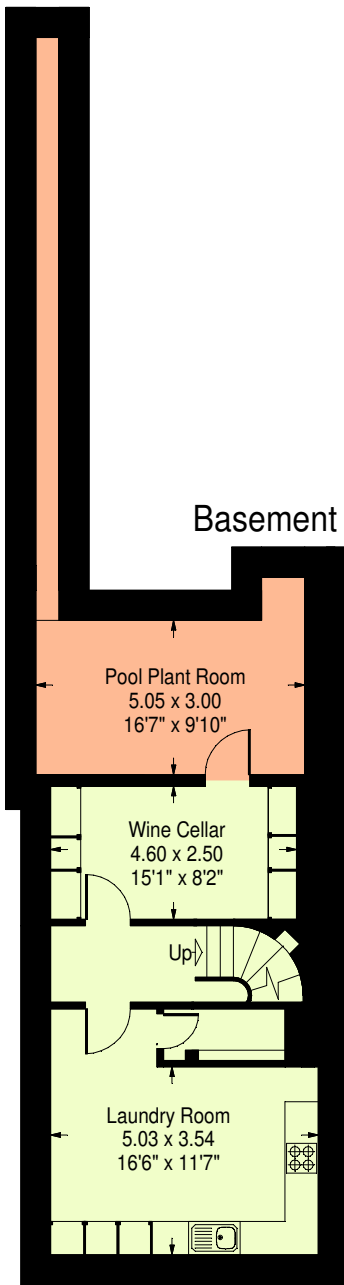
Floor Plans produced by

Proplan

01491 842925

All measurements and figures are taken
in accordance with RICS guidelines.
This plan is for guidance only and must
not be relied upon as a statement of fact.

Elsworthy Road
London NW3



Floor Plans produced by
Proplan
01491 842925
All measurements and figures are taken
in accordance with RICS guidelines.
This plan is for guidance only and must
not be relied upon as a statement of fact.

Elsworthy Road, London NW3

Approx. Plot Area:
600 sq.m / 0.15 Acres

Communal Gardens

Rear Garden

Patio

Lightwell

Lightwell

Store Room

Store Room

Driveway

Front Garden



Floor Plans produced by

Proplan

01491 842925

All measurements and figures are taken
in accordance with RICS guidelines.
This plan is for guidance only and must
not be relied upon as a statement of fact.

APPROX. SCALE

